



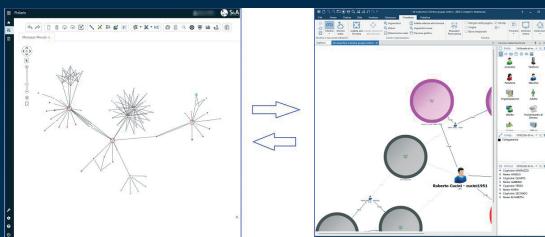
## AUTOMATIC GENERATION OF SOPHISTICATED REPORTS

Like all S&A SpA solutions, Polaris also includes a module dedicated to the generation of summary documentation. The Reports are created using templates designed to meet specific customer needs, also allowing the user who must produce them, to choose the sources from which to get the information and the type of data they must contain.



## Full compatibility with i2 Analyst's Notebook

Polaris is fully compatible with the world's most popular link analysis client, i2 Analyst's Notebook. Thanks to a simple Drag & Drop you can transfer a chart from Polaris to the i2 client and vice versa.



Via Sante Bargellini, 4 - 00157 Roma

Tel. +39 06 43530923

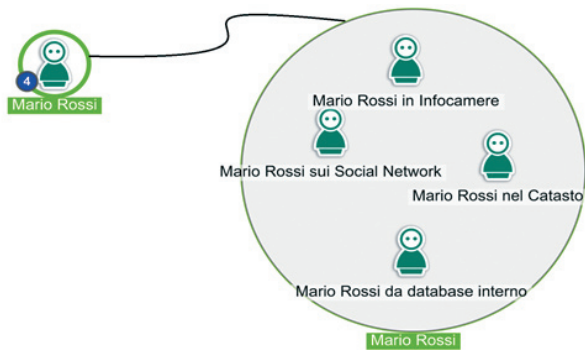
info@sealink.it

www.sealink.it



## MULTIPLE INTEGRATION SOURCES

Polaris, a web-based application, integrates data from every kind of sources outside or inside the company independently from the format (Open Sources, trusted data base, Social Media). All the sources can be searched through a single query. And each result can be compared as well to find matches in more data base.

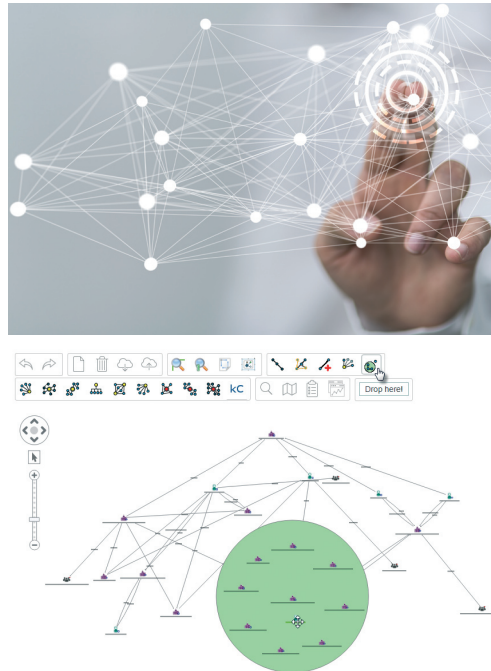


This tool proves excellent for carrying out due diligence, aml, anti-fraud and reputational analysis.

## LINK ANALYSIS DATA

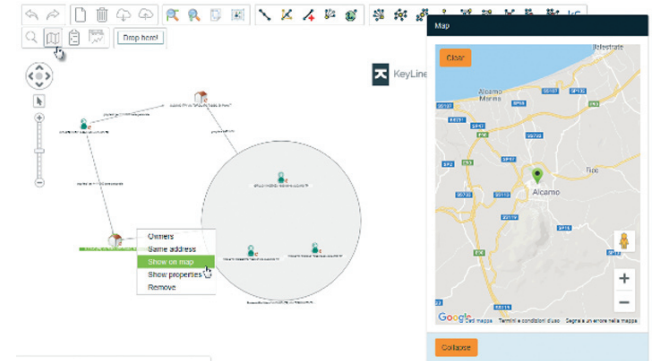
What emerges from the search on the sources is graphically represented on the internal viewer.

Thanks to extensive navigation, starting from elements of interest, very complex relational graphs can be obtained, which can be analyzed more easily with link analysis tools such as Social Network Analysis, clusters, GraphReduction, layouts, dependency analysis, path search, and others.



## GEOLOCATION OF DATA

Concerning elements that contain geo-referenceable data, for example those coming from the Land Registry, it is possible to perform an operation of sending them on cartographic systems, in order to examine positions, distances between places, concentrations and anomalous distributions of elements on the territory.



## SMART IMPORTS FROM TEXT FILES

To perform searches on several items at the same time, Polaris is endowed with the *Ai Importer* function, which allows you to capture with a click of a button or simply by dragging a file in the appropriate import area, a list of elements on which to launch multiple queries.

File import procedures can be automated in order to be reused for files of the same type.

This mode allows the analyst to integrate data from other systems, with information from the sources present in Polaris.

## LOOKING FOR KEYWORDS

Thanks to the *Quick Engine* module, you can perform text analysis with Polaris. Starting from public or internal documents, previously created, you can explore the entire content and extract particularly salient information, which can then be viewed as a Person, an Organization or a Place entity on the viewer.

