



Highlights

- Reduce the time that is required to deliver rich, actionable intelligence from complex sets of disparate data
 - Identify connections, patterns, and key intelligence that might otherwise be missed
 - Increase understanding of complex criminal, terrorist, and fraudulent networks
 - Simplify the communication of complex information to support timely and accurate decision making
 - Deliver near immediate productivity gains with rapid deployment
 - Understand intelligence more easily with a visual analysis solution used worldwide
-

IBM i2 Analyst's Notebook

Discover and deliver actionable intelligence

IBM® i2® Analyst's Notebook® provides rich visual analysis capabilities that can help to quickly turn complex sets of disparate information into high-quality, actionable intelligence. This helps analysts and others involved in intelligence analysis identify, predict, and avoid criminal, terrorist and fraudulent activities.

i2 Analyst's Notebook enables users to quickly collate both structured and unstructured information into a powerful visual analysis environment, helping analysts to more quickly build a single cohesive intelligence picture. The intuitive, modern user experience reduces user familiarization times, which enables users and organizations to quickly take advantage of productivity gains. Additionally, it features a flexible data model and comprehensive range of visual analysis tools designed to help users discover key individuals, connections, relationships, events, patterns and trends that may have been missed. It also includes Social Network Analysis capabilities designed to deliver increased comprehension of social relationships and structures within networks of interest.

The results gained from this detailed analysis can then be shared with intuitive visual briefing charts or as independent visualizations which can easily be included in other end intelligence products. These simple visualizations can simplify the communication of sometimes complex information, which helps to create more timely and accurate operational decision making.

i2 Analyst's Notebook is a technology that has been used for over 20 years by over 2,000 organizations worldwide. It is designed to help government agencies and private sector businesses in their fight against increasingly sophisticated criminal and terrorist organizations.



Overview

i2 Analyst's Notebook is a powerful visual analysis environment that provides users with a comprehensive range of capabilities so they can identify actionable intelligence hidden within disparate data sets. These capabilities can help organizations and their users to:

- Combine all available information and build a single cohesive intelligence picture
- Strengthen insight and understanding of complex criminal, terrorist, and fraudulent activities and networks
- Increase the depth of intelligence products for more effective resource utilization
- Clearly communicate analysis findings to enable more informed and effective operational decision making

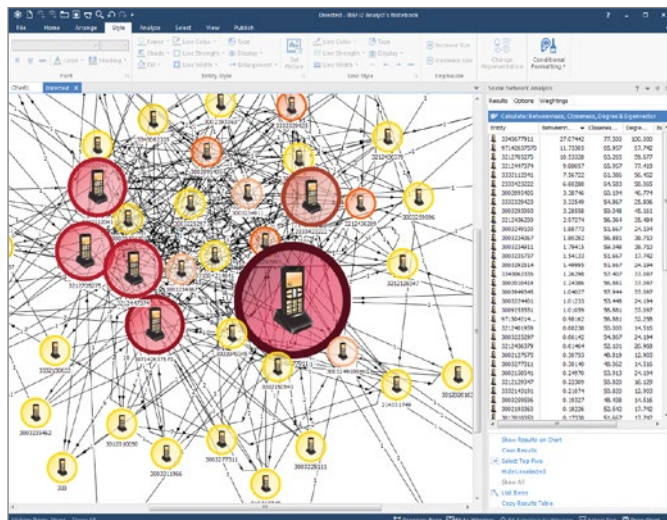


Figure 1: More quickly identify key individuals within target networks with social network analysis.

Flexible data acquisition

i2 Analyst's Notebook provides a range of methods to quickly take in the wide variety of information that intelligence analysts regularly need to manage. This flexible approach to data acquisition enables users to input a broad range of data types.

Examples include call records, financial transactions, IP logs and mobile forensics data. i2 Analyst's Notebook enables users to:

- Rapidly import structured data in an analysis-ready form with a wizard-style visual importer
- Simplify the manual data entry process with an intuitive drag and drop data input mode
- Connect to and query available data sources via numerous data acquisition extensibility options

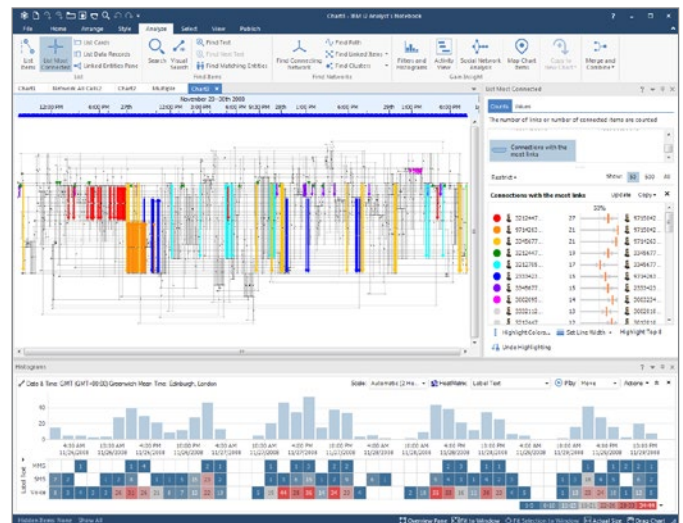


Figure 2: Identify and highlight relevant information faster with a powerful range of analysis and visualization capabilities.

Flexible data model and representation

i2 Analyst's Notebook provides an environment that offers users flexibility in how data is modeled and visualized. This flexibility helps users to not be constrained by the input of complex relational data.

Information can be sorted in the most relevant and effective manner to suit the type of data to be viewed and the analysis to be performed.

The visualization environment provided by i2 Analyst's Notebook enables users to represent information in association or timeline charts. These can be represented as entities, links, events, timelines, or attributes, in order to best present the type of data to be analyzed. This helps improve the effective analysis and visualization of a wide range of data sets by enabling users to:

- Quickly turn data into easily understandable visualizations to aid the analysis of complex scenarios
- Represent information to best suit the data to be analyzed with extensive network and temporal options
- Perform both analysis and intelligence production tasks all from within a single environment.

These capabilities can help analysts to quickly analyze complex data sets and enables users to:

- Quickly highlight key individuals and relationships and their connections to key events with core link analysis capabilities
- Understand the critical timeline of events or patterns within criminal activities with powerful temporal analysis tools
- Gain better insight and understanding of the structure, hierarchy and operations of complex networks with integrated Social Network Analysis tools
- Identify potential important intermediaries between seemingly unconnected entities in a network
- Instantly highlight potentially key information in communications and transactional data
- Combine association, temporal and geospatial aspects of data with multi-dimensional analysis views

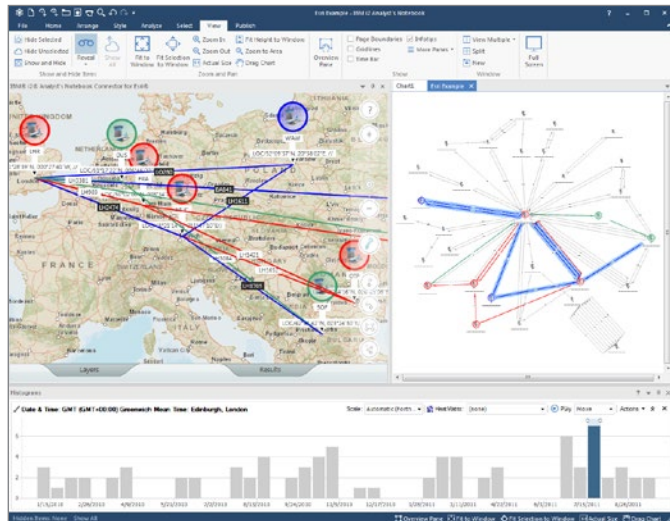


Figure 3: Geospatial data visualization¹ adds another data dimension to aid comprehension.

Powerful analysis capabilities

i2 Analyst's Notebook provides a wide range of analysis capabilities. The extensive analysis environment enables users to quickly gain understanding of the data they are faced with and pinpoint key intelligence.

It provides the tools to quickly analyze complex data sets with the ability to create multiple analysis views on data of interest. Data can be displayed as association, temporal, spatial, statistical, and spreadsheet views. These multiple views help to give a wider understanding of all the important who, what, where, when and why aspects of the data

Simple communication of complex data

While the discovery and development of intelligence is key, it is equally important that analysts are able to effectively share critical findings in a clear and concise manner. The effective dissemination of data is vital to aid operational decision makers to make rapid, accurate, and informed decisions.

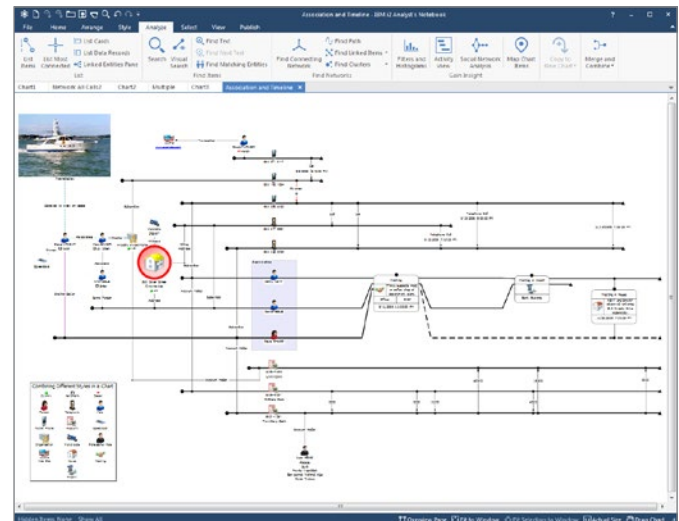


Figure 4: Use multiple methods of representing information within a chart to support dynamic thought processes.

i2 Analyst's Notebook provides users with the means to:

- Communicate complex data with intuitive and easy-to-follow visual briefing charts.
- Create detailed charts and visualizations to enhance other intelligence products.
- Produce redacted versions of charts to easily share the right level of information to others with differing security clearances.
- Share charts with non-Analyst's Notebook users with the freely available IBM® i2® Chart Reader.

Extensibility

i2 Analyst's Notebook is a powerful stand-alone visual analysis environment that provides an a unique experience offering near immediate productivity gains. There are, however, an extensive range of options available to further extend i2 Analyst's Notebook capabilities to provide even greater value to analysts and their wider organization.

Extensibility options are available for:

- **Data Centric Analysis**—IBM i2 Analyst's Notebook Premium
- **Data Acquisition**—IBM i2 iBridge, IBM i2 Information Exchange for Analysis Search
- **Geospatial Analysis**—IBM i2 Analyst's Notebook Connector for Esri
- **Unstructured Data Analysis**—IBM i2 Text Chart, IBM i2 Text Chart Auto Mark
- **Collaboration**—IBM i2 Analyze (via i2 Analyst's Notebook Premium), IBM i2 iBase
- **Extensibility**—IBM i2 Analyst's Notebook SDK

For more information

To learn more about IBM i2 Analyst's Notebook, please contact your IBM representative, or visit: ibm.com/i2software

To learn more about all of the IBM Smarter Cities solutions, visit: ibm.com/smartercities



© Copyright IBM Corporation 2017

IBM Corporation
Software Group
Route 100
Somers, NY 10589

Produced in the United States of America
March 2017

IBM, the IBM logo, IBM.com, i2, and Analyst's Notebook are trademarks of International Business Machines Corp., registered in many jurisdictions worldwide. Other product and service names might be trademarks of IBM or other companies. A current list of IBM trademarks is available on the Web at "Copyright and trademark information" at www.ibm.com/legal/copytrade.shtml.

This document is current as of the initial date of publication and may be changed by IBM at any time. Not all offerings are available in every country in which IBM operates.

THE INFORMATION IN THIS DOCUMENT IS PROVIDED "AS IS" WITHOUT ANY WARRANTY, EXPRESS OR IMPLIED, INCLUDING WITHOUT ANY WARRANTIES OF MERCHANTABILITY, FITNESS FOR A PARTICULAR PURPOSE AND ANY WARRANTY OR CONDITION OF NON-INFRINGEMENT. IBM products are warranted according to the terms and conditions of the agreements under which they are provided.

¹ Geospatial data visualization requires the availability of third party applications which are subject to separate license terms.



Please Recycle
